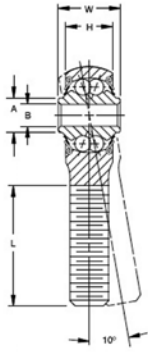
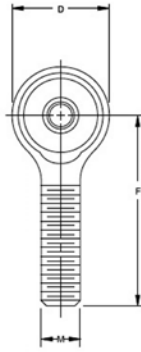


BEARINGS

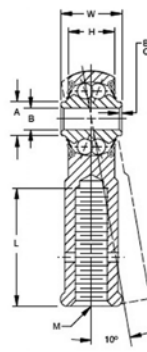
**AN 946
MALE THREADED SHANK**



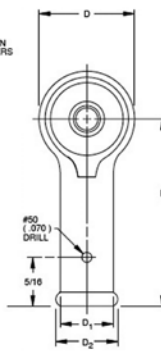
MS 21151



**AN 951
FEMALE THREADED SHANK**



MS 21153



**AN948 HOLLOW SHANK
SOLID SHANK**



**MS21152
MS21150**



AP

Bearing No.	MS Dash No.	B	D	W	H	A	F	G	L	J	K	M		Balls	Lbs. Approx.	Weight Type Seal	Price Each
		Bore	Outside Diam.	Width Inner Ring	Width Outer Ring	Shoulder Diam. Inner Ring (Approx.) In.	Bore Center to end of Shank	Overall Dimension	Thread Length of Shank Hole Depth In.	Bead or Hex Diam. Across Flats In.	Shank Diam.	Thread Or Drill Size Inches	Size				
		+0.0000 -0.0005 In.	+0.010 -0.010 In.	+0.000 -0.010 In.	+0.010 -0.010 In.		+0.010 -0.010 In.	+0.010 -0.010 In.			+0.010 -0.010 In.						

MALE THREAD - MS 21151

Precision series. Double row, ball, self-aligning. 10° permissible misalignment in either direction. These bearings are manufactured with an internal play of .0004 in. (.010mm) max. Inner and outer raceway surface finish = 8 micro in. AA max. Equipped with PTFE seals. Exposed surfaces except bore, cap, and seals are cadmium plated. Outer shank – 90,000 psi min. tensile strength. Prelubricated (refer to nomenclature page)

REP3ML3	-1	.1900	.781	.437	.328	.281	1.375	1.766	.750			10-32 LH	.1697 .1667	20	1/8"	.04	Solid Seal	\$59.65
REP3MR3	-2	.1900	.781	.437	.328	.281	1.375	1.766	.750			10-32 RH	.1667	20	1/8"	.04	Solid Seal	\$74.85
REP3M6A	-3	.1900	.969	.500	.407	.304	2.031	2.516	1.313			3/8"-24 RH	.3479 .3449	24	1/8"	.05	Solid Seal	\$85.75
REP3M6-2N	-4	.1900	.781	.437	.328	.281	1.375	1.766	.750			3/8"-24 RH	.3479 .3449	20	1/8"	.05	Solid Seal	\$59.75
REP4M6	-8	.2500	.938	.593	.438	.345	1.875	2.344	1.125			3/8"-24 RH	.3479 .3449	22	5/32"	.07	Plyo-Seal	\$61.75
REP4ML6	-9	.2500	.938	.593	.438	.345	1.875	2.344	1.125			3/8"-24 LH	.3479 .3449	22	5/32"	.07	Plyo-Seal	\$67.75
REP5M6	-10	.3125	1.25	.870	.686	.506	2.438	1.563	3/8-24			3/8"-24	.4050			.24		\$84.85

FEMALE THREAD - MS 21153

Precision series. Double row, ball, self-aligning. 10° permissible misalignment in either direction. These bearings are manufactured with an internal play of .0004 in. (.010mm) max. Inner and outer raceway surface finish = 8 micro in. AA max. Equipped with PTFE seals. Exposed surfaces except bore, cap, and seals are cadmium plated. Outer shank – 90,000 psi min. tensile strength. Prelubricated (refer to nomenclature page)

REP3N*	-1	.1900	.781	.437	.328	.281	1.375	1.766	.750	.438	.375	1/4"-28 RH	.2298 .2268	20	1/8"	.05	Plyo-Seal	\$82.75
REP3N2***	-2	.1900	.781	.437	.328	.281	1.375	1.766	.750	.438	.438	5/16"-24 RH	.2884 .2854	20	1/8"	.06	Plyo-Seal	\$82.75
REP3F4	-3	.1900	.781	.500	.328	.281	1.375	1.766	.750	.438	.375	1/4"-28 RH	.2268	20	1/8"	.06	Solid Seal	---
REP4F5	-6	.2500	.938	.593	.438	.345	1.469	1.938	.750	.438	.438	5/16"-24 RH	.2884 .2854	22	5/32"	.07	Plyo-Seal	\$72.75

HOLLOW SHANK - MS 21152

REP3H5**	-1	.1900	.781	.437	.328	.281	1.375	1.766	.875		.435		.272	20	1/8"	.06	Plyo-Seal	\$70.75
RE4H6																	Solid Seal	\$83.85
REP4H6	-2	.2500	.938	.593	.438	.345	1.875	2.344	1.219		.625		.386	22	5/32"	.12	Plyo-Seal	\$83.85
REP4H8	-3	.2500	.938	.593	.438	.345	1.625	2.093	.875		.625	33/64	.515	22	5/32"	.08	Plyo-Seal	---

SOLID SHANK MS21150

REP3S7	-1	.19	.791	.437	.328	.281	1375				.430		SOLID	22	5/32"	.07	Plyo-Seal	\$92.75
REP4S10	-2	.2500	.938	.593	.438	.345	1.875	2.344			.625		SOLID	22	5/32"	.16	Plyo-Seal	\$67.75

*Dimensionally Same as Heim F34-14
 **Dimensionally Same as Heim F31-14
 ***Dimensionally Same as Heim F35-14

Bearings with the letter "P" in part number are new manufacture, with Plyoseals.
 Bearings without the letter "P" in part number are new surplus, with solid metal seals.