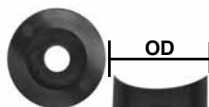


SADDLES - FITTINGS - TANGS - BRACKETS



SUPER-TOUGH STANDOFF SADDLES - TYPE II

Part No.	Max Air #	Fits	O.D.	Hole	HT	Price
05-02056	S01-84	1.625	1.000	.266	.188	\$1.83
04-00922	S01-44	1.750	1.000	.266	.188	\$1.85
05-02060	S01-74	1.875	1.000	.266	.188	\$1.83
05-02064	S04-94	2.000	1.000	.266	.440	\$1.85

SUPER-TOUGH SADDLES - TYPE II

Part No.	Max Air #	Fits	OD	Hole	HT	Each
S4451	S-24	1.500	1.375	.266	.188	---
S4453	S-84	1.625	1.375	.266	.188	\$2.10
S4462	S-94	2.000	1.375	.266	.188	\$1.20

ALUMINUM SADDLES

P/N-Type	Our P/N	Fits	Base OD	Hole	Height	Price
4315/I	04-00927	1.63	1.00	.266	.125	\$4.20

AP



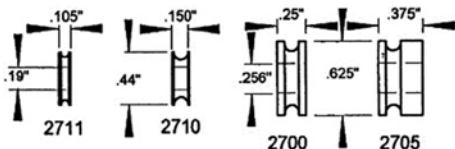
ALUMINUM TUBE CONNECTOR

1 x .058" P/N 15-05249 \$8.50



TUBE CONNECTORS - NYLON
Fits 1 x .049 (Maxair TC-1)
P/N 05-02097 \$2.42

CABLE FITTINGS



1/16" Cable, Steel, AN111-3 P/N CF2710 \$2.50
3/32" Cable, Aluminum P/N CF2700 \$2.45
3/32" Cable, Aluminum P/N CF2705 \$2.25
1/16" Cable, Stainless, AN111C-3 P/N CF2710S \$2.19

ELBOW FITTINGS



These are tube fittings used to assemble parts to an ultralight frame. No specific ultralight or application.
1" x .083" P/N 15-05250 \$8.50
1" x .058" P/N 15-05249 \$8.50

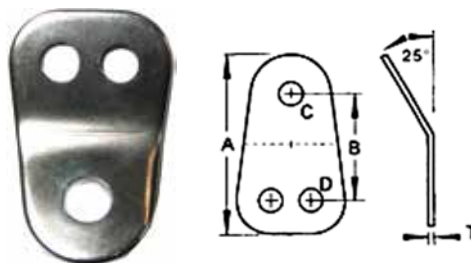
NYLON WASHERS



Model	P/N	O.D.	I.D.	Thickness	Each
NW2059	05-01970	.875	.256	.031	\$0.48
NW2055	05-01969	.256	.500	.060	\$0.58
NWPW-4	05-01973	.625	.250	.062	\$0.22

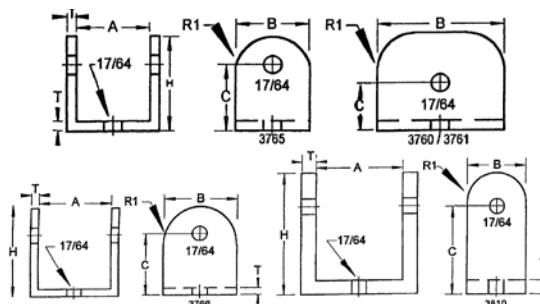
TANGS

Made of 304 stainless steel. All measurements are in inches.



No.	Maxair	Description	T	A	B	C	D	Part No.	Price
3	T11-DFT	3-Hole Flat	14G	1.91	1.09	.26	.26	05-02077	\$3.95
	T8-DFT	3-Hole Flat	12G	1.91	1.09	.32	.26	05-02078	\$3.75
	T9-DAT	3-Hole Bent	14G	1.86	1.04	.26	.26	05-02079	\$2.60

ALUMINUM BRACKETS



Model	Part No.	A	B	C	H	T	R1	ALLOY	Each
B3772	05-01930	.500	.750	.500	.750	.125	---	6061-T6	\$4.20
B3765	05-01928	1.000	1.000	.875	1.250	.125	.500	6063-T5	\$5.75
B3760	05-01926	1.000	1.750	.625	1.250	.125	.500	6063-T5	--
B3761	05-01927	1.000	1.750	.906	1.250	.125	.750	6063-T5	\$7.50
B3795	---	1.000	2.250	.670	1.250	.125	.500	6063-T5	--
B3766	05-01929	1.250	1.250	1.062	1.500	.125	.750	6063-T5	\$6.50
B3796	---	1.250	2.375	.875	1.500	.125	.500	6063-T5	--
B3810	05-01931	1.500	1.000	1.500	2.000	.250	.500	6061-T6	\$13.95



PLASTIC ID TUBE CAPS

Model	Part No.	Fits Tube Size	Maxair	Each
TC4112	05-02091	2 x .049	EC-10	\$2.75

CONTROL CABLE FAIRINGS

Injection molded ABS plastic fairings used to cover hole in airframe where control cables emerge such as the rudder cables at the rear of the fuselage. May be installed on any airframe surface but is most normally used on fabric covered aircraft where they are bonded on with fabric cement and covered with a fabric patch.

P/N 05-05750 \$5.35 pair