



Installation Instructions SunBeam Equinox



AeroLEDs, LLC
8475 W. Elisa St.
Boise, ID, 83709
208-850-3294

NOTE: A printed copy of this document may not be the latest revision. It is the responsibility of the user to ensure that the latest revision is used. The latest revision of this document may be printed from the AeroLEDs electronic document repository. Revision history follows on page 2

This document contains proprietary information of AeroLEDs. Neither receipt nor possession thereof confer any right to reproduce or use, or disclose, in whole or in part, any such information without written permission from AeroLEDs.

Approval	Name	Intent	
Author	Josiah Savino	Installation and Operation Instructions for the SunBeam Equinox Series Lights	
Check	Nate Calvin		
Quality	Mark McCormack		
Date:	5 March 2025		
Status: Released	Typed signatures indicate approval. Handwritten, or electronic signature approval of this document is on file at AeroLEDs, Boise, Idaho.	Document Number 0013-0015	Revision IR

REVISION RECORD

Rev	Description	Date	Author
IR	Initial Release	3/5/2025	J. Savino

TABLE OF CONTENTS

1	System Description	4
2	Model Number	4
3	Airworthiness Limitations	4
4	Instructions for Continued Airworthiness	4
5	Installation	4
5.1	Installation Procedures	5
5.2	Approved Aircraft Makes and Models	5
5.3	Troubleshooting	5
6	Diagrams	6
6.1	Mounting	6
6.2	Wiring	7

1 System Description

The SunBeam Equinox LED aircraft light is manufactured under FAA-PMA standards in a rectangular format to fit a variety of aircraft. It features Landing and Taxi modes as well as integrated Pulse or “WigWag”, which helps prevent midair collisions.

2 Model Number

Table 1. SunBeam Equinox Specifications

Model	Part Number	Description	Voltage (VDC)	Current (A)		Weight (oz)
SunBeam Equinox	90-1000-LT-12	Landing and Taxi Light	14	Landing	3.6	8.8
				Taxi		
	90-1000-LT-24		28	Landing	1.8	
				Taxi		

3 Airworthiness Limitations

The Airworthiness Limitations section is FAA approved and specifies maintenance required under **14 CFR, §43.16** and **14 CFR, §91.403** of the Federal Aviation Regulations unless an alternative program has been FAA approved. There are no additional airworthiness limitations.

4 Instructions for Continued Airworthiness

SunBeam Equinox light assemblies are not user serviceable. Should any individual LED fail, entire unit must be replaced.

Note: To reduce eye strain, use an optical filter such as dark glasses or a blue covering dome during LED inspection.

PERIODIC INSPECTIONS: An annual inspection shall be performed unless the OEM specifies a shorter interval.

5 Installation

Consult **14CFR, §43.13-1B** for guidance on acceptable methods, techniques, and practices. Nano lights mount onto a supplied or optional bracket (see mounting diagram).

5.1 Installation Procedures

1. This installation procedure is for a single light installation. The procedure is identical for multiple light installations.
2. Ensure that the proper part number, 90-1000-LT-12 for 14VDC aircraft or 90-1000-LT-24 for 28VDC aircraft, is installed. Refer to AC 43.13-1B for acceptable practices when working on aircraft electrical systems.
3. Disconnect aircraft power or disable applicable circuit breakers
4. Reference OEM manual to remove existing light if applicable
5. Install suitable connectors and/or splices to connect light assemblies in accordance with wiring diagram(s) Section 6.2
6. Using the appropriate hardware, install light(s) as per Section 6.1 Mounting Diagram
7. Re-connect aircraft power or enable applicable circuit breakers
8. Verify proper operation of LED light(s)
9. Record installation with logbook entry

Note: Shielded cable is recommended

It is recommended that ground connections for all lights be made at a single location on aircraft central ground bus. This “single point ground” scheme counteracts ground loops and ground bounce that can occur when using airframe as a ground.

5.2 Approved Aircraft Makes and Models

A list of aircraft makes and models that the **SunBeam Equinox light replaces is listed under PMA Supplement per** Part 23 STC SA02386BAK or latest FAA approved revision.

5.3 Troubleshooting

1. Check for proper voltage at power input wire to light
2. Ensure light is adequately grounded
3. Check for continuity in wiring and connections
4. If wiring is verified, remove light and bench-check with appropriately sized power supply

For additional questions contact AeroLEDs tech support at 1-208-850-3294

⚠ WARNING: This product may contain chemicals including Methylene Chloride which is known to the State of California to cause cancer, and Bisphenol A, which is known to the State of California to cause birth defects or other reproductive harm. For more information go to www.P65Warnings.ca.gov

6 Diagrams

6.1 Mounting

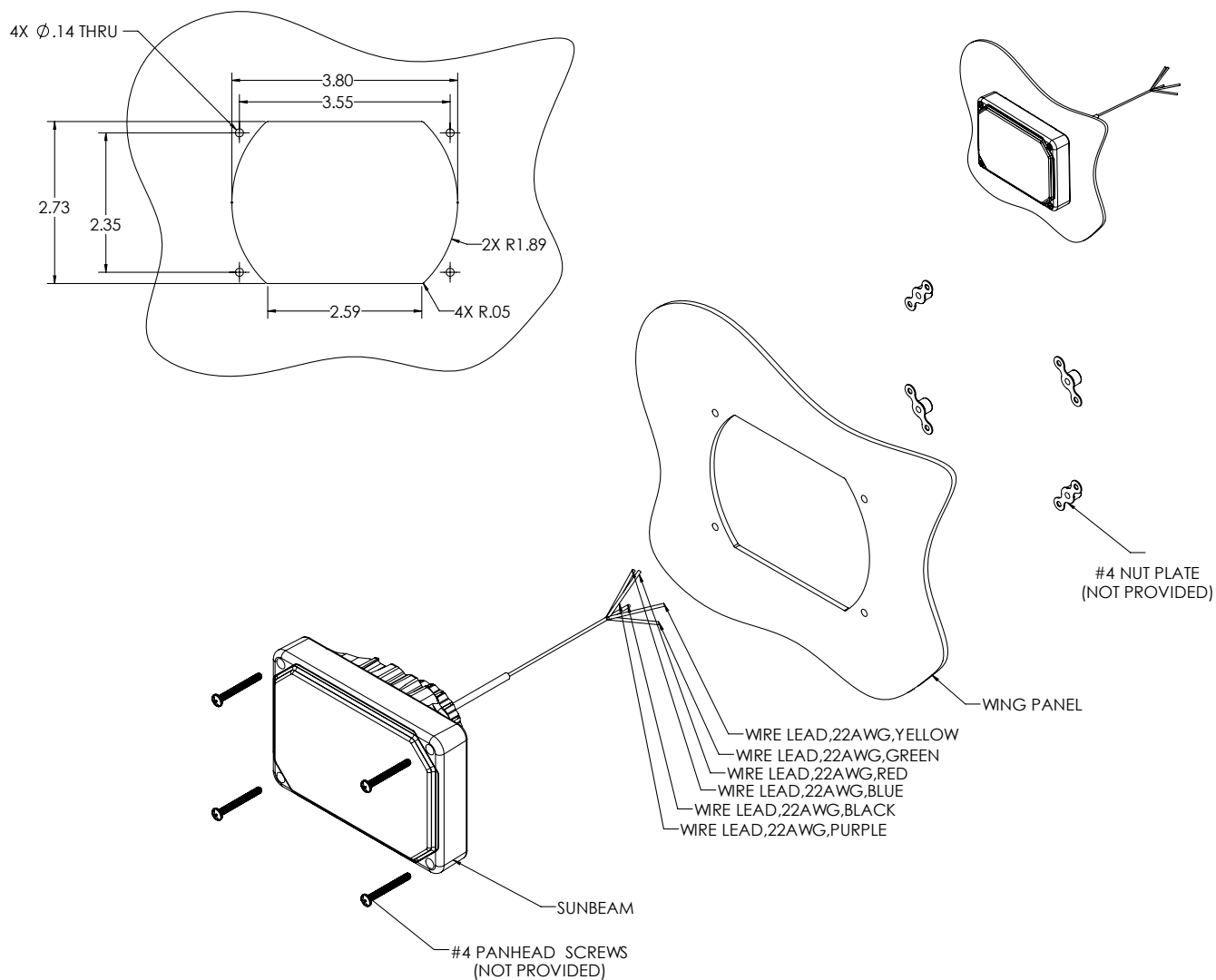


Figure 1. Mounting Diagram

6.2 Wiring

6.2.1 Single Light

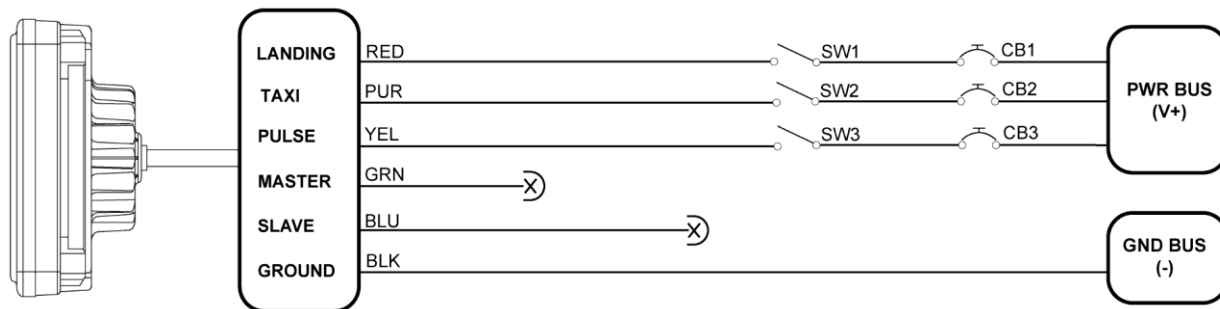


Figure 2. Single Light Wiring Configuration

6.2.2 Two Lights

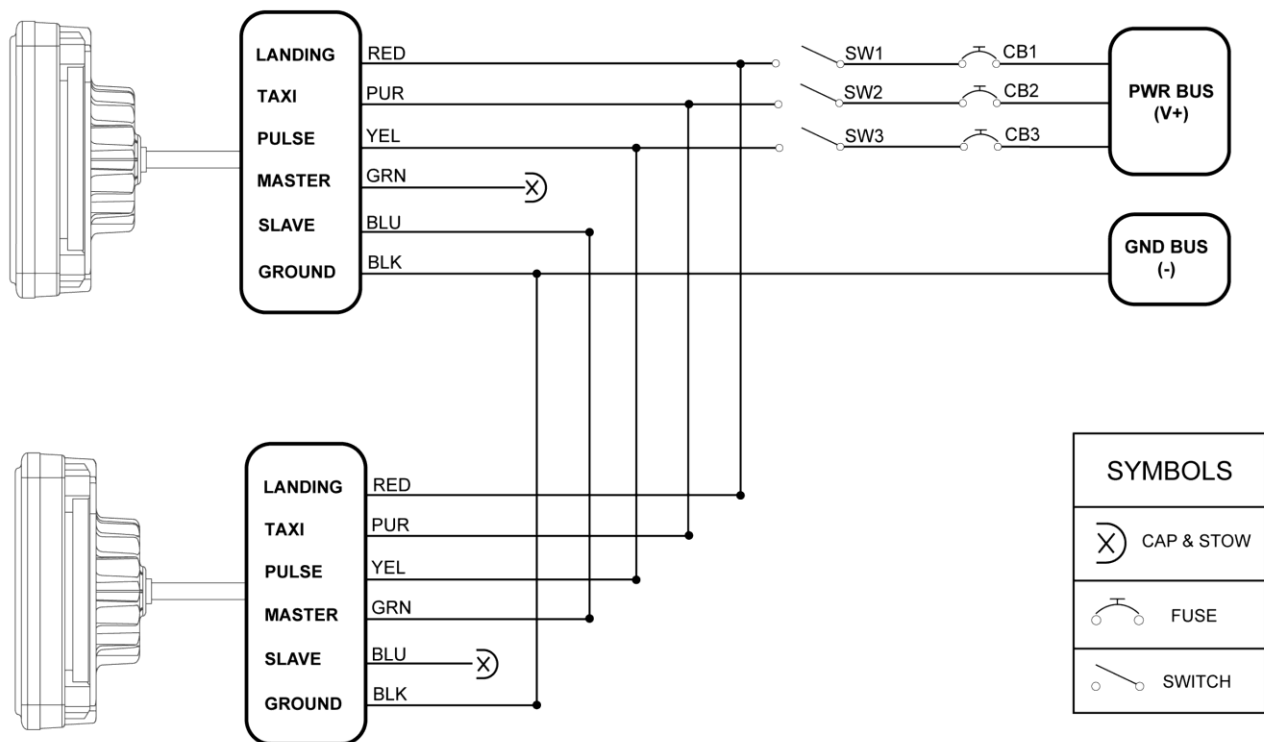


Figure 3. Two Light Wiring Configuration

If lights are installed in proximity (within two feet), install using an AeroLEDs sync circuit

- AeroLEDs part number 00-8120
- Installation Guide 0017-0002