

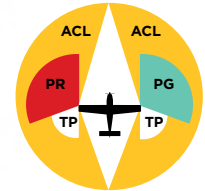
PULSAR

600

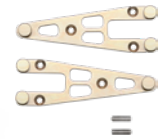


CERTIFIED EXPERIMENTAL

- POSITION RED
- POSITION GREEN
- ANTI-COLLISION
- TAIL POSITION



**PULSAR 600 MOUNT
PART# KIT-0011
(INCLUDED)**



Pulsar 600 navigation LED's are designed for some of the most extreme operating conditions on the planet making these lights ideal for use in Experimental | Certified | Commercial | ARFF | UAV | UAS | Military Applications

PULSAR 600 PROVIDES THREE HIGH PERFORMANCE FUNCTIONS:

POSITION (Red | Green): Directional red and green LEDs provide clear wingtip orientation for safe, compliant operation.

ANTI-COLLISION STROBE: High-intensity white strobe dramatically enhances aircraft visibility in both day and night operations, aiding in recognition and collision avoidance.

REAR POSITION (White): Aft-facing white light completes 360° coverage, improving visibility from all directions.

Pulsar 600 LEDs are designed with an industry-standard three-position screw pattern and a patented mounting bracket making them ideal for legacy light replacements.

5 YEAR WARRANTY

HIGH-EFFICIENCY, LOW-POWER LEDs

LONG-LIFE, LOW-MAINTENANCE DESIGN

SHOCK AND VIBRATION RESISTANT

BUILT-IN THERMAL PROTECTION

UV HARDCOATED POLYCARBONATE LENS

ALUMINUM CLEAR ANODIZED BASE

AeroLEDs STROBE SYNCHRONIZATION

AERODYNAMIC, LOW-DRAG PROFILE

1011-0040 Rev_IR

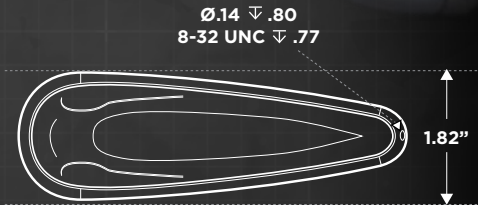
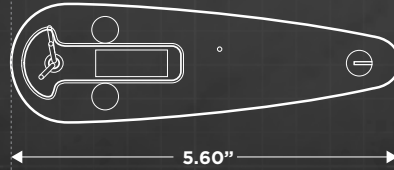
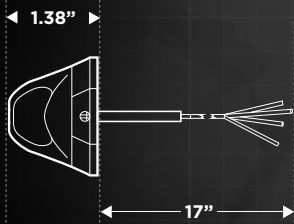
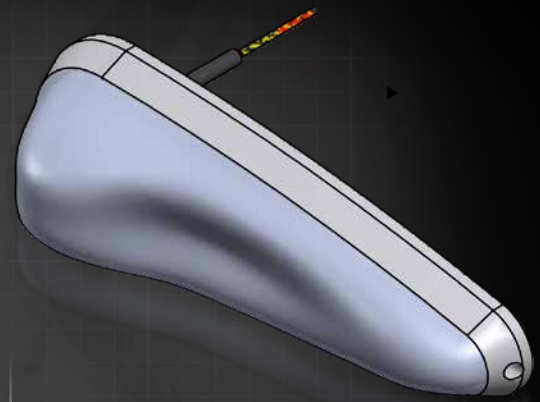


www.AeroLEDs.com • 208-850-3294



WARNING: This product may contain chemicals known to the State of California to cause cancer and birth defects or other reproductive harm. For more information, visit aeroleds.com/regulatory.

PULSAR 600



LEARN
MORE
INFO



CERTIFIED



EXPERIMENTAL



SPECIFICATIONS		PULSAR 600 12V - LEFT	PULSAR 600 12V - RIGHT	PULSAR 600 24V - LEFT	PULSAR 600 24V - RIGHT
PART #'S	Certified	11-1100-12-L	11-1100-12-R	11-1100-24-L	11-1100-24-R
	PMA STC TSO C-30c Type I, II, III and TSO C-96a Class II				
Voltage	Experimental	01-1100-12-L	01-1100-12-R	-	-
	Nominal	14VDC	14VDC	28VDC	28VDC
	Minimum	9VDC	9VDC	18VDC	18VDC
	Maximum	15VDC	15VDC	30VDC	30VDC
NAV POS Current		0.8A @ 14VDC	0.8A @ 14VDC	0.4A @ 28VDC	0.4A @ 28VDC
Strobe Current		0.6A at 14V (Avg.) 4.95A at 14V (Peak)	0.6A at 14V (Avg.) 4.95A at 14V (Peak)	0.4A at 28V (Avg.) 3.15A at 28V (Peak)	0.4A at 28V (Avg.) 3.15A at 28V (Peak)
Strobe Duration		190ms (41FPM)			
Dimensions (LxWxD)		5.6" x 1.9" x 1.4"			
Weight		4 oz each light			
Mounting		KIT-0011 (included)			

1011-0040 Rev_IR



www.AeroLEDs.com • 208-850-3294



WARNING: This product may contain chemicals known to the State of California to cause cancer and birth defects or other reproductive harm. For more information, visit aeroleds.com/regulatory.