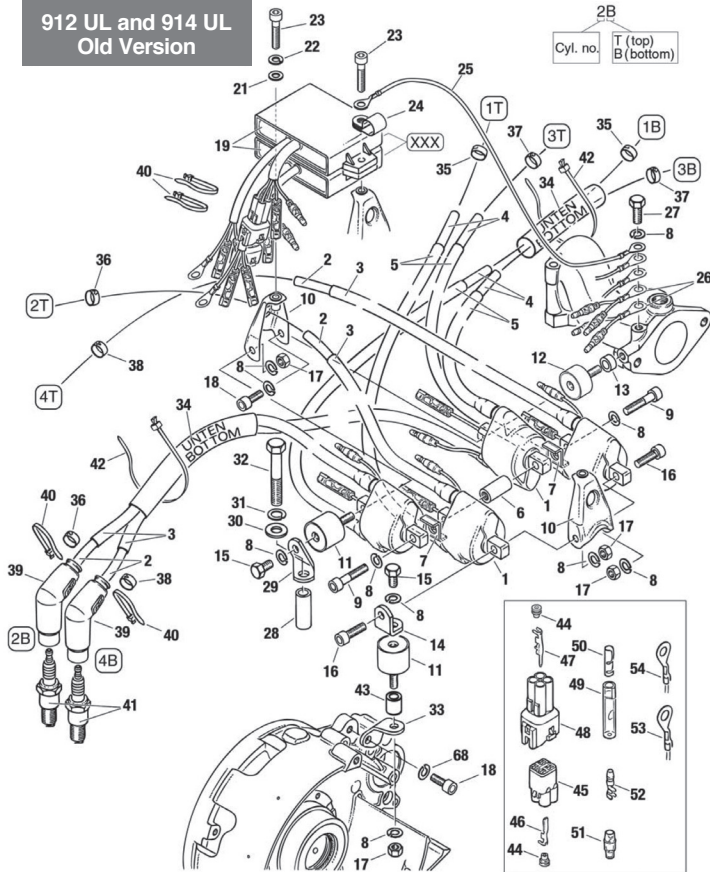


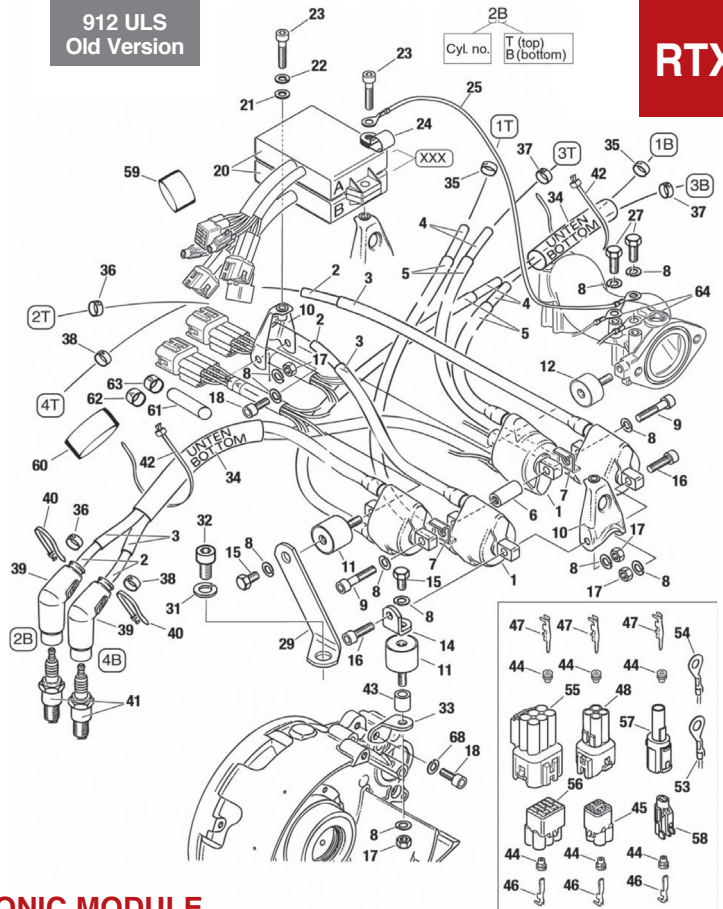
912 | 914 ENGINE

RTX

**912 UL and 914 UL
Old Version**



**912 ULS
Old Version**



DOUBLE IGNITION COIL ASSEMBLY, SMD- ELECTRONIC MODULE

Item No.	Part No	Description	Qty. Req.			Price	Item No.	Part No	Description	Qty. Req.			Price
			912 UL	912 ULS	914 UL					912 UL	912 ULS	914 UL	
1-5	966-219	DOUBLE IGNITION COIL	4s		4s	\$427.96	28	847-792	SPACER 8.4/12/30	1g	1g	1g	\$15.25
1-5	966-218	DOUBLE IGNITION COIL ASSEMBLY	4m	4m	4m	\$371.39	29	851-266	BRACKET	1g	1g	1g	\$11.26
2	865-710	IGNITION CABLE 7 MM	ARa	ARa	ARa	\$45.80	29	851-481	BRACKET	1h	1h	1h	\$11.47
3	860-990	PROTECTION HOSE 8x1	ARb	ARb	ARb	\$17.11	30	250-311	WASHER 8.4	1g	1g	1g	\$0.41
4	865-710	IGNITION CABLE 7 MM	ARc	ARc	ARc	\$45.80	31	945-832	LOCK WASHER A8	1g	1g	1g	\$0.23
5	860-990	PROTECTION HOSE 8x1	ARd	ARd	ARd	\$17.11	32	240-281	HEX. SCREW M8x50	1g	1g	1g	\$1.92
6	842-740	DISTANCE NUT M6x24	1			\$14.66	32	440-192	ALLEN SCREW M8x16	1h	1h	1h	\$1.21
6	842-742	DISTANCE NUT M6x22.5	(1)i	1	1	\$12.12	33	851-267	BRACKET	1	1	1	\$11.26
7	953-390	SEPARATING PLATE	(2)j	2	2	\$5.35	34	860-734	GLASS FIBER-SILICON SHEATING 120	2	2	2	\$8.35
8	945-831	LOCK WASHER A6	9p	10p	9p	\$0.23	35	860-741	MARKING SLEEVE 1	2	2	2	\$1.09
9	840-883	ALLEN SCREW M6x30	2	2	2	\$1.45	36	860-742	MARKING SLEEVE 2	2	2	2	\$1.09
10	953-127	IGNITION COIL BRACKET ASSEMBLY	2	2	2	\$75.27	37	860-743	MARKING SLEEVE 3	2	2	2	\$1.09
11	860-710	RUBBER BUFFER 25x19xM6	2	2	2	\$34.41	38	860-744	MARKING SLEEVE 4	2	2	2	\$1.09
12	960-060	RUBBER BUFFER 25x15xM6	1	1	1	\$28.81	39	265-249	SPARK PLUG SOCKET	8	8	8	\$41.50
12	860-710	RUBBER BUFFER 25x19xM6	1i		1i	\$34.41	40	866-710	CLAMP 142x2.5MM	8	8	8	\$1.26
13	247-700	SPACER 6.4/10/5	ARe	ARe	ARe	\$3.32	41	897-255	SPARK PLUG 12 MM	8			\$3.65
14	851-260	IGNITION COIL BRACKET	1	1	1	\$11.26	41	297-940	SPARK PLUG 12 MM		8		\$9.42
15	240-772	HEX. SCREW M6x10	2	2	2	\$0.63	41	881-330	SPARK PLUG 12 MM			8	\$21.57
16	241-935	ALLEN SCREW M6x20	2	2	2	\$0.63	41	297-656	SPARK PLUG 12 MM	8	8	8	\$21.95
17	242-211	HEX. NUT M6	4	4	4	\$0.41	42	251-920	CLAMP 279x3.6MM	2	2	2	\$1.97
18	241-237	ALLEN SCREW M6x16	3	3	3	\$0.73	43	847-701	SPACER 6.5/10/11	(1)j	(1)j	1	\$8.92
19	965-446	SMD-ELECTRONIC MODULE (4p+single con.)	2		2	\$1,016.66	44	260-130	CABLE GROMMET	AR	AR	AR	\$2.28
20	965-440	SMD-ELECTRONIC MODULE (6p+4p+single con.)	2f			\$1,016.66	45	265-260	CONNECTOR HOUSING 4-POLE	AR	AR	AR	\$6.51
20	965-442	SMD-ELECTRONIC MODULE (6p+6p+single con.)			2m	\$1,311.40	46	265-275	FASTON CONNECTOR	AR	AR	AR	\$2.45
20	965-444	SMD-ELECTRONIC MODULE (6p+6p+single con.)	2o	2o		\$1,016.66	47	265-210	FLAT PIN TERMINAL	AR	AR	AR	\$1.92
21	827-800	WASHER A 5.5	1	1	1	\$5.99	48	265-262	CONNECTOR HOUSING 4-POLE	AR	AR	AR	\$14.11
22	945-830	LOCK WASHER A5	1	1	1	\$0.14	49	964-072	INSULATION SHEATH	AR		AR	\$2.28
22	945-750	LOCK WASHER A5	1	1	1	\$0.14	50	964-067	FASTON CONNECTOR 3.96	AR		AR	\$2.28
23	240-186	ALLEN SCREW M5x25	2	2	2	\$0.54	51	964-077	INSULATION SHEAT	AR		AR	\$2.50
24	851-118	CABLE CLAMP 11.3/M5	1	1	1	\$6.58	52	964-062	FASTON CONNECTOR 3.96	AR		AR	\$2.28
25	965-788	MASS CABLE ASSEMBLY	1	1	1	\$13.32	53	964-059	CABLE SHOE M6	AR	AR	AR	\$1.23
26	965-781	MASS CABLE ASSEMBLY	2		2	\$47.90	54	964-055	CABLE SHOE M5	AR	AR	AR	\$0.85
27	241-187	HEX. SCREW M6x16	1	2	1	\$0.53	55	265-269	CONNECTOR HOUSING 6-POLE	AR	AR	AR	\$17.11
27	241-186	HEX. SCREW M6x16	1	2	1	\$0.48	56	265-265	CONNECTOR HOUSING 6-POLE	AR	AR	AR	\$9.47