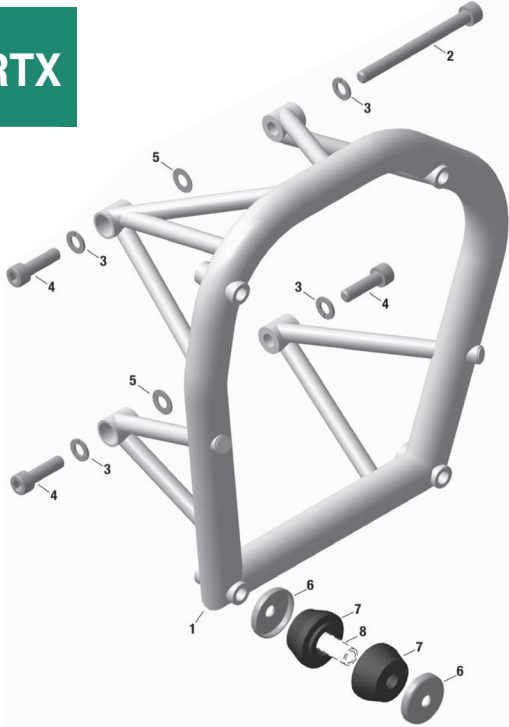




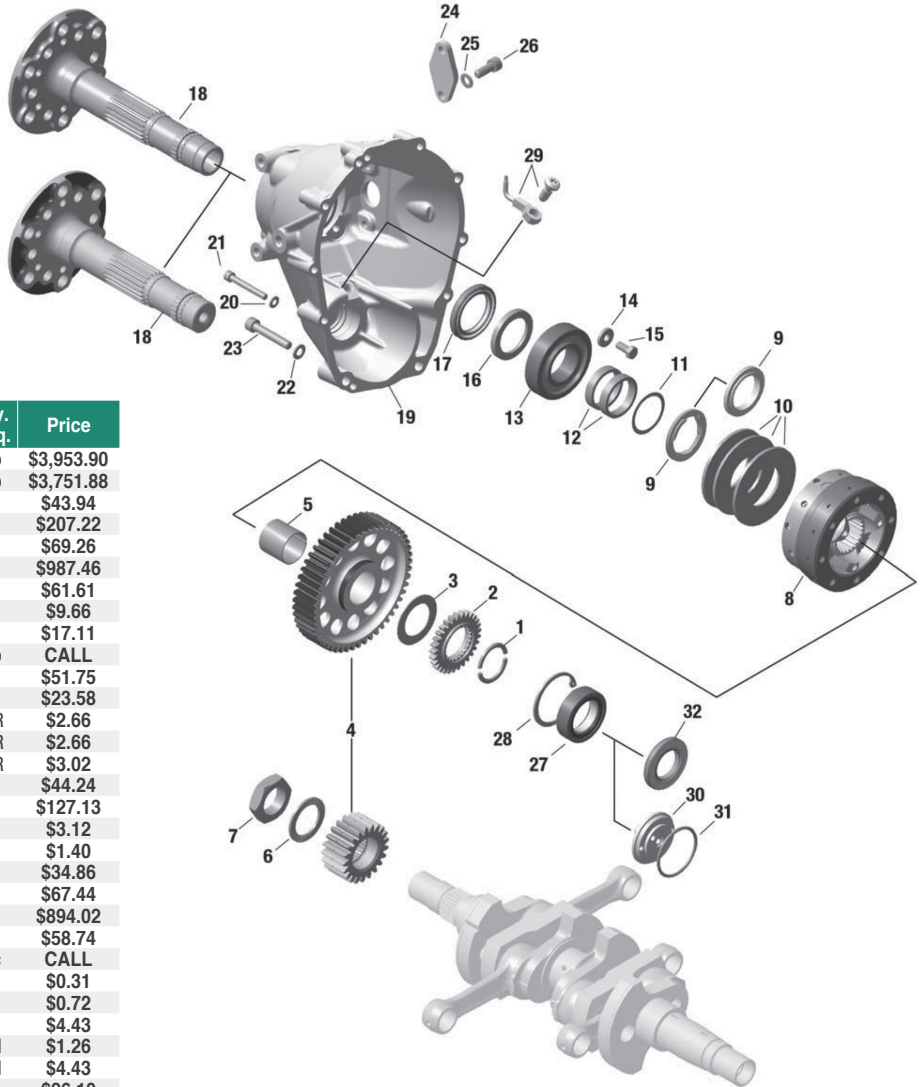
RTX



ENGINE SUSPENSION FRAME

Item No.	Part No	Description	Qty. Req.	Price
1	886-563	ENGINE SUSPENSION FRAME ASSEMBLY	1	\$995.00
2	941-487	ALLEN SCREW M10X110	1	\$6.61
3	945-833	LOCK WASHER A10	4	\$0.34
4	840-948	ALLEN SCREW M10X35	3	\$4.63
5	927-952	THRUST WASHER 10.1/20/0.5	AR	\$4.78
5	927-953	THRUST WASHER 10.1/20/1.0	AR	\$4.90
6-7	860-695	SHOCK MOUNT SET	1	\$4.90
6	944-240	CUP WASHER	8	\$59.75
7	860-690	SHOCK-MOUNT	8	\$107.61

- Items not illustrated / AR: as required / NLA: not available



PROPELLER GEAR ASSEMBLY WITH OVERLOAD CLUTCH

Item No.	Part No	Description	Qty. Req.	Price
1-28	893-340	GEARBOX WITH CLUTCH I 2.43-2 version 2	1b	\$3,953.90
1-28	893-345	GEARBOX WITH CLUTCH I 2.43-3 version 3	1b	\$3,751.88
1	926-035	RING HALF	2	\$43.94
2	834-232	DRIVE GEAR 29 T	1	\$207.22
3	827-992	THRUST WASHER 33.2/51/1.2	1	\$69.26
4	886-518	GEAR SET I 2.43	1	\$987.46
5	933-362	BUSHING 31x33x29.8	1	\$61.61
6	845-431	FRICITION WASHER VS30	1	\$9.66
7	842-579	HEX. NUT M30x1.5 12 MM LH	1	\$17.11
8	996-915	OVERLOAD CLUTCH ASSEMBLY	1b	CALL
9	847-787	STEP COLLAR	1	\$51.75
10	838-216	DISK SPRING B80 80x41x3	3	\$23.58
11	927-401	SHIM 35.4/43/0.2	AR	\$2.66
11	927-402	SHIM 35.4/43/0.5	AR	\$2.66
11	927-403	SHIM 35.4/43/1.0	AR	\$3.02
12	847-687	SPACER 35.2/42/8	2	\$44.24
13	832-578	BALL BEARING 6207E TN9 35-72-17	1	\$127.13
14	944-320	WASHER 7.2/18.8/3	4	\$3.12
15	941-760	HEX. SCREW M7x16	4	\$1.40
16	926-022	SPACER RING 36/50/5.5	1	\$34.86
17	950-470	OIL SEAL AS 40x55x7 FPM	1	\$67.44
18	937-036	PROPELLER SHAFT	1	\$894.02
18	937-035	PROPELLER SHAFT	1	\$58.74
19,29	610-362	GEAR COVER ASSEMBLY PACKED	1c	CALL
20	827-962	WASHER 6.4	8	\$0.31
21	241-823	ALLEN SCREW M6x45	8	\$0.72
22,23	940-077	HEX./TORX-FLANGE SCREW M8X45	2	\$4.43
22	944-131	WASHER 8 ISO 7092-300 HV	2d	\$1.26
23	841-562	ALLEN SCREW M8x45	2d	\$4.43
24	926-151	COVER	1	\$26.10
25	945-832	LOCK WASHER A8	2	\$0.23
26	940-592	ALLEN SCREW M8x20	2	CALL
27	232-241	ROLLER BEARING 205 E C3 25-52-15	1	\$102.00
28	945-820	RETAINING RING 52x2	1	\$4.54
29	950-200	OIL SEAL AS 30x52x7 FPM	1	\$100.47
30	810-301	OIL INLET FLANGE	1	\$189.14
31	430-175	O-RING 46x3	1	\$14.36
32	456-520	OIL SPRAY NOZZLE ASSEMBLY	1	CALL

- Items not illustrated / AR: as required

a break away torque 700-900 Nm (516-663 ft lb.)

b break away torque 600-800 Nm (442-590 ft lb.)

c Gearbox with oil spray nozzle, starting with gearbox S/N 74000

d replaced by 940-077 (pos. 22,23)