

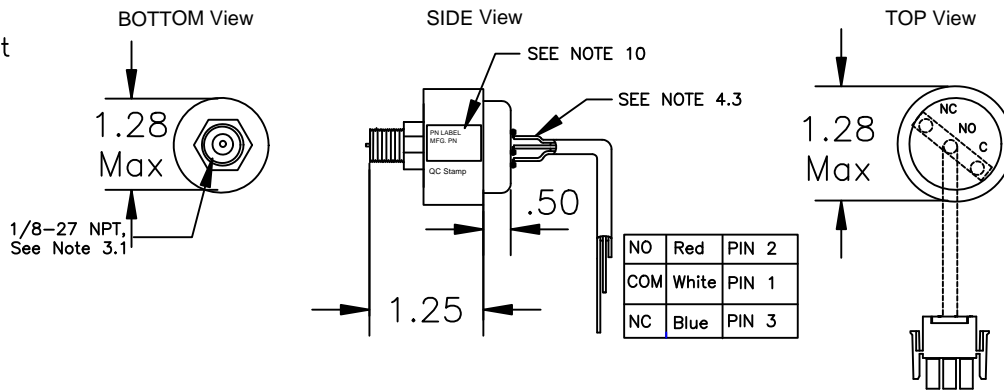
NOTES: THE SPECIFICATION AND REQUIREMENTS BELOW MEET AND EXCEED THE PERFORMANCE, RELIABILITY, AND SERVICE LIFE OF THE ORIGINAL SWITCH. THE DESCRIBED DRAWING BELOW HAS BEEN CLASSIFIED BY IDENTICALITY.

REVISION BLOCK					
REV	ECD #	ZONE	DESCRIPTION OF CHANGE(S)	DATE	APPROVED
Rev-0			INITIAL RELEASE	8-12-11	LD/JRM

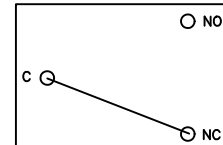
SPECIFICATION AND REQUIREMENTS.

- SERVICE: Application: Cabin Altitude Switch
- TYPE: Electro-mech DESIGN
- BODY: Alum, NPT-Brass
  - MOUNTING: NPT 1/8-27 MALE
  - WEIGHT: 4.0 OZ. MAX.
- ELECTRICAL -(SPDT) NO CIRCUIT
  - wht/red circuit open at sea level pressure.
  - 28-VDC.
  - 2 AMP RESISTIVE.
  - ELECTRICAL-TERMINAL: (3P), solder  
Terminals, Heatshrink, Harness (6in), Jacket stripped 2in, Wire 1/4in, AMP 350766-1
- REQUIREMENT OF SYSTEM:
  - Switch Actuates- 12,000 ft. +/-500 ft.
  - Switch Deactuates- 10,000 ft. min.
  - Adjustability: N/A
- TEMPERATURE -50F(-46C) TO +131F(+55C).
- SERVICE LIFE: 2500 CYCLES REQ'D.
- PROOF PRESSURE: 10.0 PSIG
- CYCLES PER Flight: (1)
- MARKINGS: See Figure A.
- MTBF: 50,000 hrs

Figure (A).  
Marking Information - fuel, chem resistant.  
Altitude Switch, Lone Star Aviation Corp.  
LS03-02020-01, Rev-0, SN: \_\_\_\_\_  
Act: 12,000+/-500 ft, Deact: 10,000 ft



Electrical Schematic:



Switch in un-actuated State.

NOTE 4.3:  
Wire, 20 awg. harness 6.0 " stripped 1/4 inch, labeled mil spec: M16878/4BGE or Equiv

Connector Type: AMP 350766-1  
Pin Type: AMP 350690-1

Pressure Switch Settings		Reference Block
NO SWITCH, INCR Altitude:	12,000 +/- 500 (ft) (actuates) by	PART NUMBERS
NO SWITCH, DECR -Altitude	10,000 ft. min. (deactuates) by	LS03-02020_01
Dead Band:	(1,000 ft) Typical	Drawing: Rev-0
FACTORY SET:	YES	
TEST REPORT RTCA/DO-160E		See Test Report: 6-21-11 Drawing LSPE-03506_A Rev-0
ACCEPTANCE TEST PROCEDURES		

ITEM 1	1	LS03-02020-002	Pressure Switch Altitude
ITEM #	QTY.	PART NO.	DESCRIPTION
UNLESS NOTED OTHERWISE TOLERANCE BLOCK:		THIS DOCUMENT AND THE DATA DISCLOSED HEREWITH IS NOT TO BE REPRODUCED, USED, OR DISCLOSED IN WHOLE OR IN PART TO ANYONE WITHOUT WRITTEN AUTHORIZATION FROM LONE STAR AVIATION	
DIMENSIONS ARE IN METRIC DECIMALS		ANGULAR ±1°	
XX	±.030		
XXX	±.015		
XXXX	±.0005		
DO NOT SCALE DRAWING	APPROVALS	DATE	<p>TITLE Pressure Switch Altitude</p>
MATERIAL: Alum Body Brass NPT	DRAWN BY LD	8-12-11	
	APPROVED BY JRM	8-12-11	
FINISH: n/a	NEXT ASSY.	SCALE NONE	SHEET 1 OF 1
		SIZE A	DRAWING NO. LSPE-03506_A
		REV-0	

Lone Star Aviation, Inc.  
604 S Wisteria Drive  
Mansfield, Texas 76063  
682-518-8882 ph  
682-518-8831 fax  
www.lonestaraviation.com

Dwg. No. LSPE-03506\_A 1 of 1 Rev-0

SH REV

A