



AERO FABRICATORS INC.

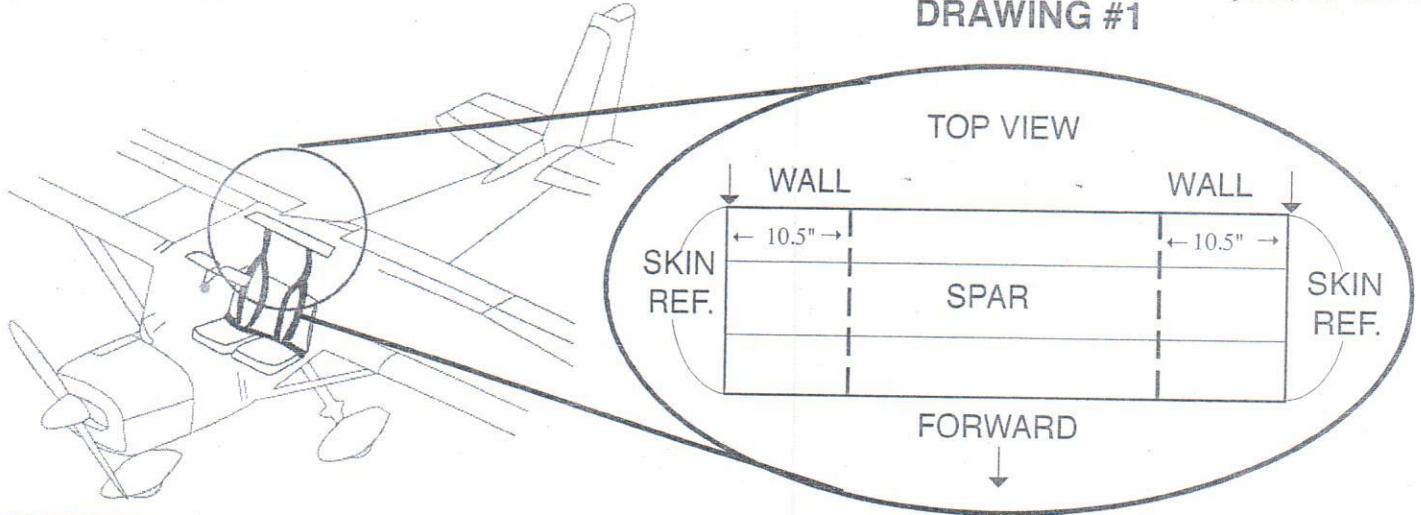
CESSNA 150-152 SERIES INSTALLATION INSTRUCTIONS AF-26

DRAWING #1

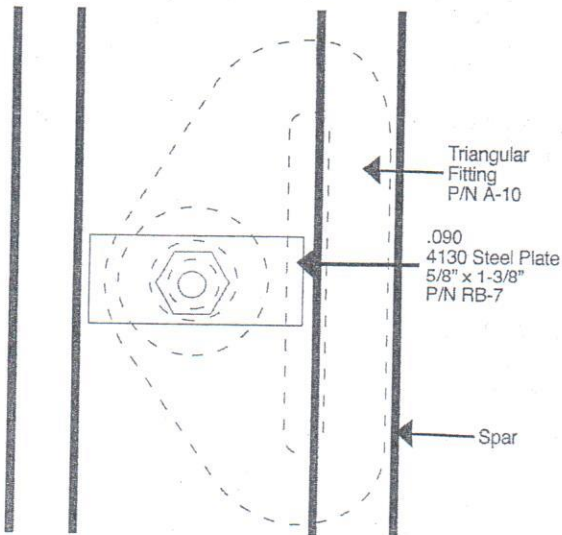
Issue Date: 9/19/1989
Revision Date: 8/11/2011
Revision Level: E
Page: 1 of 3

Phone 262-763-3145
FAX 262-763-7595

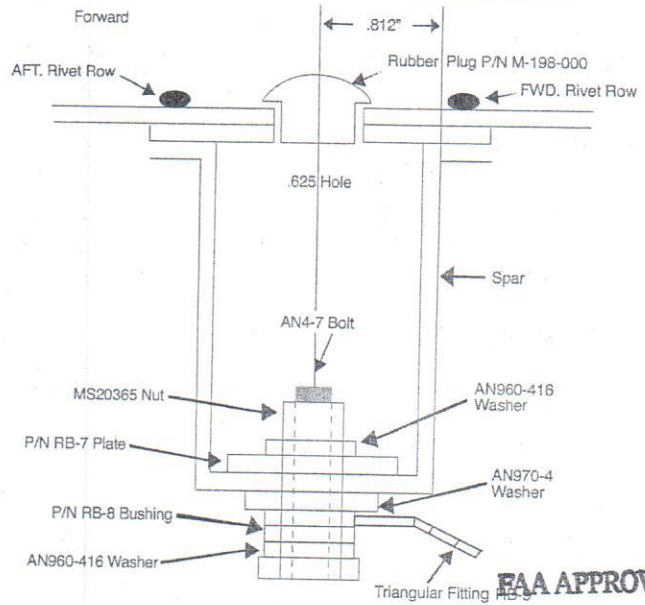
P.O. Box 181
1216 North Road
Lyons, WI 53148



DRAWING #2 TOP VIEW



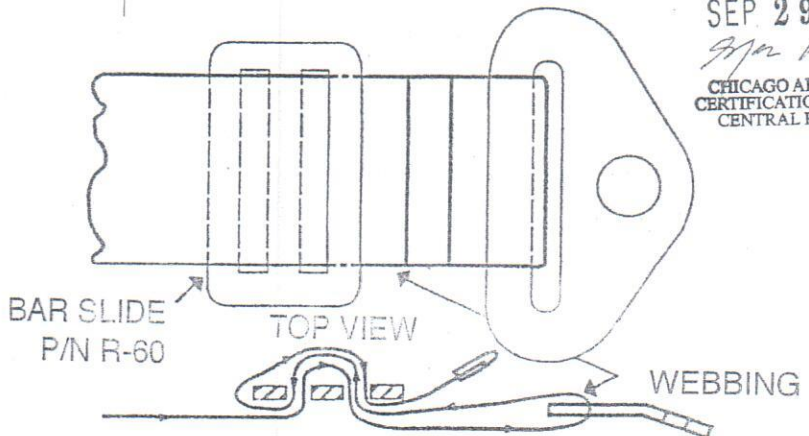
DRAWING #3 SIDE VIEW



FAA APPROVED

DRAWING #4

Aero Fabricators hereby certifies that this seat belt assembly conforms to specifications outlined in FAA-TSO-C22f and NAS-802 if and only if the end fittings are attached in the configuration shown at the right:



SEP 29 2011

SM AC2-116C
CHICAGO AIRCRAFT
CERTIFICATION OFFICE
CENTRAL REGION



Issue Date: 9/19/1989
Revision Date: 8/11/2011
Revision Level: E
Page: 3 of 3

Phone 262-763-3145
FAX 262-763-7595

P.O. Box 181
1216 North Road
Lyons, WI 53148

**CESSNA 150-152 SERIES
SHOULDER HARNESS INSTALLATION KIT PACKING LIST
AF-26**

- _____ 1-L365-428 Nut MS20365-428
- _____ 2-L960-416 Washer AN960-416
- _____ 1-L970-004 Washer AN970-4
- _____ 1-L404-07A Bolt AN4-7A
- _____ 1-M198-000 Plug, rubber
- _____ 1-4130 plate - .090 x 5/8 x 1-3/8" P/N RB-7
- _____ Bushing - 3/8 x .058 x 1/8" long 4130 tube P/N RB-8
- _____ Triangular fitting DRWG #RB-9
- _____ 1 - Aero Fabricators Shoulder Harness P/N H-702-200 with instruction sheet
- _____ 1 - Aero Fabricators Seatbelt Model #90-91 with instruction sheet
- _____ 1 - STC

FAA APPROVED

SEP 29 2011

SJM ACK-116C

CHICAGO AIRCRAFT
CERTIFICATION OFFICE
CENTRAL REGION



AERO FABRICATORS INC.

Issue Date: 9/19/1989
Revision Date: 8/11/2011
Revision Level: E
Page: 2 of 3

Phone 262-763-3145
FAX 262-763-7595

P.O. Box 181
1216 North Road
Lyons, WI 53148

CESSNA 150-152 SERIES INSTRUCTIONS FOR INSTALLING SHOULDER HARNESS USING AERO FABRICATORS INC. KIT AF-26

1. Gain access to the upper rear cabin carry through spar (rear wing attach spar) from inside of the aircraft, through the head liner material opening.
2. Many Cessna aircraft have a factory installed nutplate on this spar. If there are nutplates installed approximately 10-1/2" from the outboard edge of the cabin, using the cabin skin as a reference point, go directly to step #7A.
3. If after opening head liner material and there are no nutplates on the spar carry through, you must locate the pilot point 10-1/2" from the left side (using cabin skin as a reference point). The co-pilot point is located 10-1/2" from the right side, again using cabin skin as reference point (see drawing #1).
4. On the center line of the spar, locate the position of the point found in step 3, .812" aft of the forward face of the spar. This will locate your mounting point on the center of the lower spar face.
5. Drill a .250" hole at this point.
6. Locate and drill a .625" hole in the outer cabin skin, directly above the first hole, centered between the spar attach rivet rows. This hole will be located approximately .812" aft of the forward rivet row, see drawing #3.
7. Puncture hole in head liner and install triangular fitting (RB-9), angle pointing down and forward using appropriate bolts, washers, bushings nuts, plates per drawing #2 and #3. The AN970-4 washer, bushing and fitting will be in the cabin side of the headliner material.
- 7A. When a nut plate installation exists, puncture a hole in the headliner; install the triangular fitting (RB-9), angle pointing down and forward, using the bushing supplied with the kit and an AN4-7A bolt and AN970-4 washer.
8. Torque the bolt to 50-70 in-lbs as specified in AC43.13-1A, Chapter 5, Section 1.
9. Cement the rubber plug (P/N M-198-000) over the outside opening, using 3M 1300L adhesive if applicable. N/A in case with factory installed nutplate.
10. Install the shoulder harness P/N H-702-200 in the triangular fitting, using the 3 bar slide as per drawing #4.
11. Install seat belt assembly Model #90-91 per instructions included with the safety belt.
12. Make appropriate FAA form 337 and log book entry (each shoulder harness assembly weighs .75 lbs.)

FAA APPROVED

SEP 29 2011

By: A-25-116C

CHICAGO AIRCRAFT
CERTIFICATION OFFICE
CENTRAL REGION